



1967 - 2017

ASEAN ECONOMIC PROGRESS



01 ASEAN

INTRODUCTION

The Association of Southeast Asian Nations, or ASEAN, was established on 8 August 1967 in Bangkok, Thailand, with the signing of the ASEAN Declaration (Bangkok Declaration) by the five Founding Members of ASEAN, namely **Indonesia, Malaysia, Philippines, Singapore and Thailand**, or ASEAN-5.

Brunei Darussalam joined ASEAN on 7 January 1984, followed by **Viet Nam** on 28 July 1995, **Lao PDR** and **Myanmar** on 23 July 1997, and **Cambodia** on 30 April 1999, making up today's ten Member States of ASEAN, or ASEAN-10.

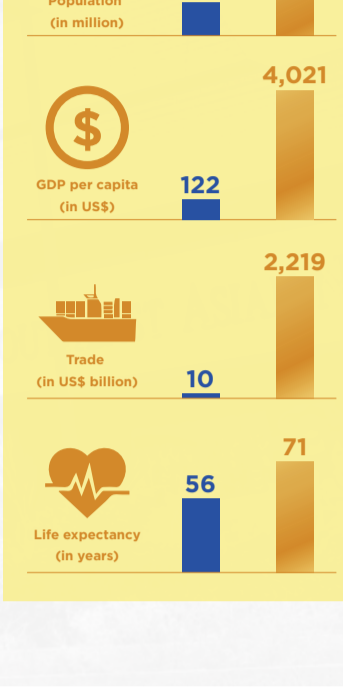


THE ASEAN COMMUNITY

Formally established on **31 December 2015**.



50 YEARS of ASEAN in Figures

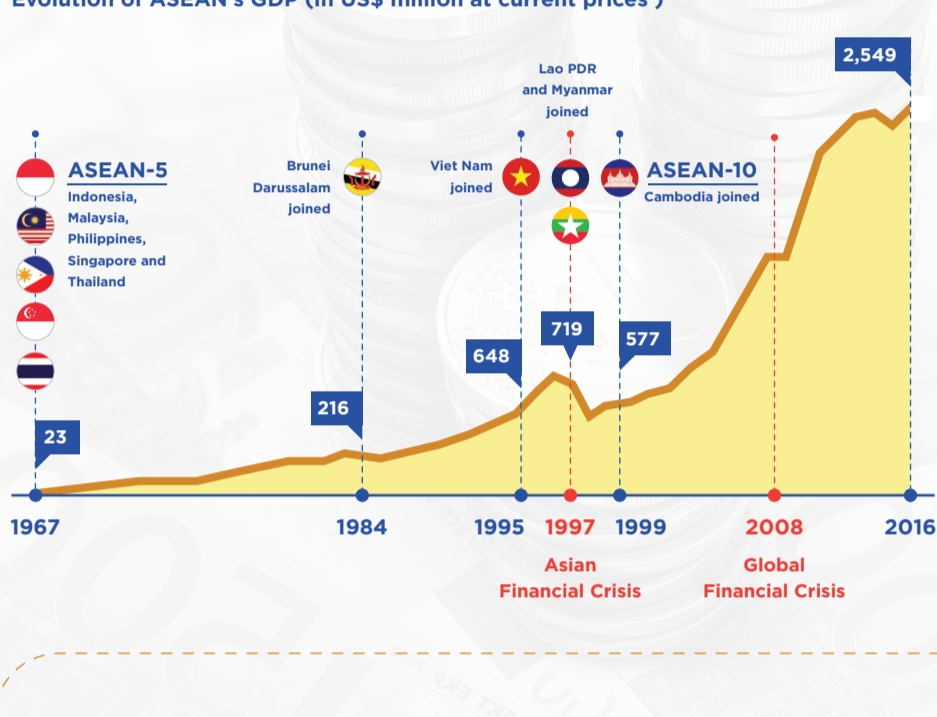


02 ASEAN GDP

6th largest economy in the world combined GDP **US\$2.55 trillion**

In 2016, ASEAN collectively stood as the **6th largest economy in the world** with a combined GDP of **US\$2.55 trillion**.

Evolution of ASEAN's GDP (in US\$ million at current prices)



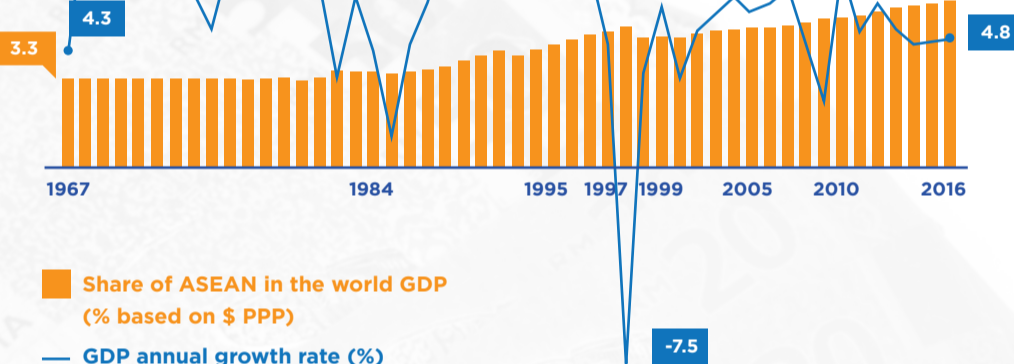
03 ASEAN REAL GDP GROWTH & SHARE IN THE WORLD GDP

Over the decades, ASEAN has consistently recorded positive real GDP growth, except in the height of Asian Financial Crisis.

Since 1999, the year ASEAN achieved full membership, real GDP growth varied between 2.5% and 7.5%. Meanwhile, ASEAN share in the world GDP has almost doubled from 3.3% in 1967 to 6.2% in 2016.

ASEAN real GDP growth stood at **4.8%** in 2016

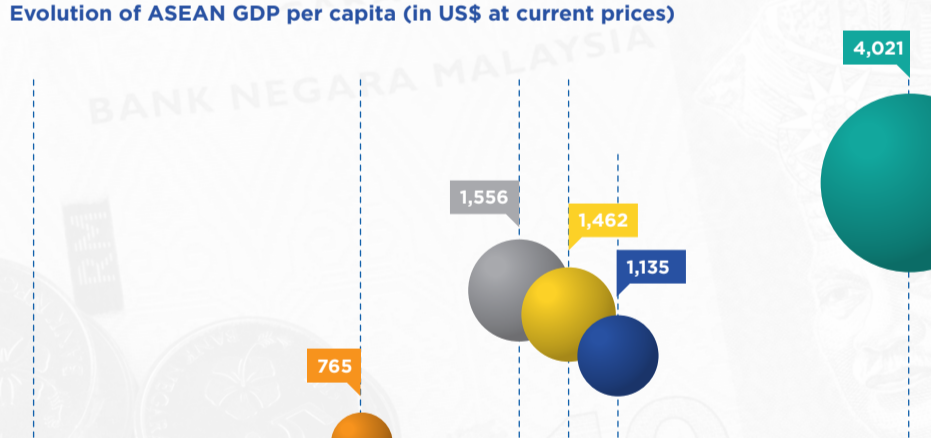
Evolution of ASEAN GDP annual growth rate and ASEAN share in the world GDP (in %)



04 ASEAN GDP PER CAPITA

Robust economic growth in the region has steadily raised the standard of living, even in the least developed ASEAN Member States. ASEAN average GDP per capita increased significantly from **US\$122** at its establishment in 1967 to **US\$4,021** in 2016.

Evolution of ASEAN GDP per capita (in US\$ at current prices)

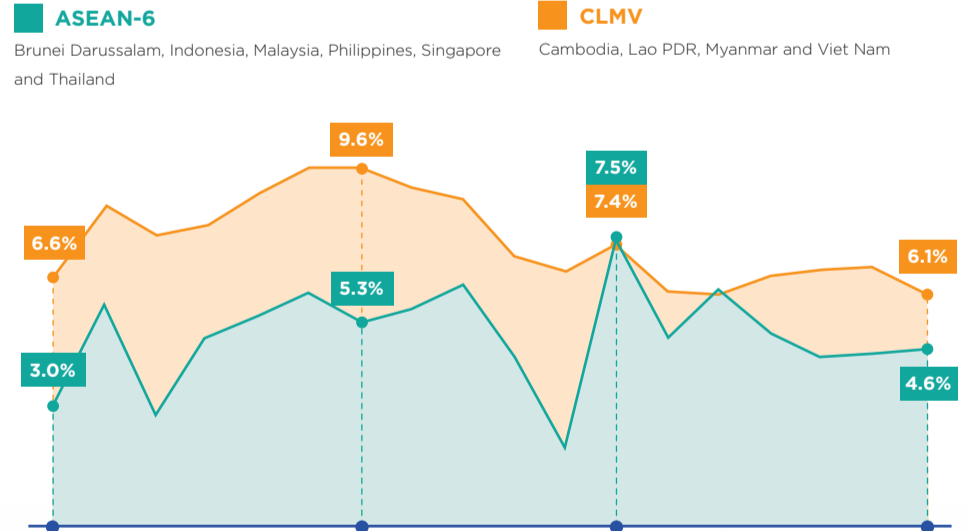


05 CLMV RAPID ECONOMIC GROWTH

Evolution of CLMV real GDP growth (%)

ASEAN-6 Brunei Darussalam, Indonesia, Malaysia, Philippines, Singapore and Thailand

CLMV Cambodia, Lao PDR, Myanmar and Viet Nam

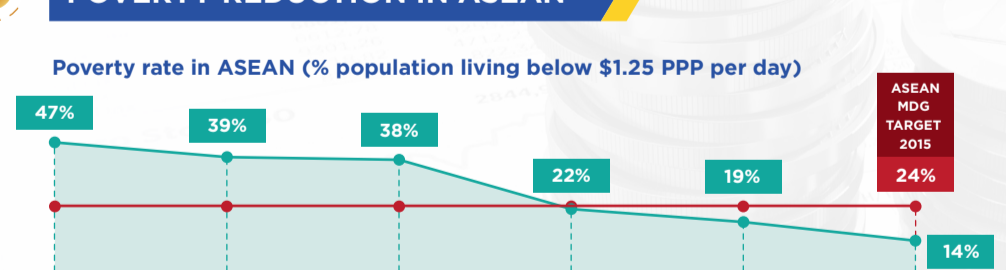


Since 1999, CLMV countries have consistently experienced **real GDP growth of over 6.1%**, peaking at 9.6% in 2005.

While CLMV countries recorded higher GDP growth than the ASEAN-6, GDP per capita in ASEAN-6 was still **2.7 times** the GDP per capita in CLMV countries in 2016: US\$4,816 as compared to US\$1,803.

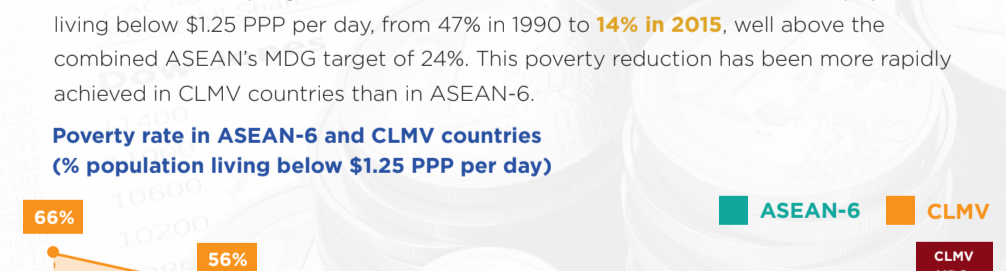
06 POVERTY REDUCTION IN ASEAN

Poverty rate in ASEAN (% population living below \$1.25 PPP per day)



ASEAN economic progress has resulted in a decline in the share of ASEAN population living below \$1.25 PPP per day, from 47% in 1990 to **14% in 2015**, well above the combined ASEAN's MDG target of 24%. This poverty reduction has been more rapidly achieved in CLMV countries than in ASEAN-6.

Poverty rate in ASEAN-6 and CLMV countries (% population living below \$1.25 PPP per day)



Source: ASEAN Secretariat.



The Association of Southeast Asian Nations (ASEAN) was established on 8 August 1967. The Member States are Brunei Darussalam, Cambodia, Indonesia, Laos, Malaysia, Myanmar, Philippines, Singapore, Thailand and Viet Nam.

The ASEAN Secretariat is based in Jakarta, Indonesia.

For inquiries, contact:
The ASEAN Secretariat
Community Relations Division (CRD)
or Statistics Division (ASEANstats)
70A Jalan Sisingamangaraja
Jakarta 12110
Indonesia
Phone: (62 21) 724-3372, 726-2991
Fax: (62 21) 739-8234, 724-3504
E-mail: public@asean.org or stats@asean.org

ASEAN: A Community of Opportunities

Catalogue-in-Publication Data
ASEAN Economic Progress
Jakarta, ASEAN Secretariat, July 2017

315.95
1. ASEAN - Statistics
2. Economics - Social - Narrowing the Development Gap

The text of this publication may be freely quoted or reprinted, provided proper acknowledgement is given and a copy containing the reprinted material is sent to the Community Relations Division (CRD) of the ASEAN Secretariat, Jakarta.

General information on ASEAN appears online at the ASEAN Website: www.asean.org

Copyright Association of Southeast Asian Nations (ASEAN) 2017.
All rights reserved.

The ASEAN Secretariat

70A Jalan Sisingamangaraja
Jakarta 12110

(+6221)7262991, 7243372
(+6221)7398234, 7243504

public@asean.org
www.asean.org



This leaflet is supported by European Union through the EU-ASEAN COMPASS Project